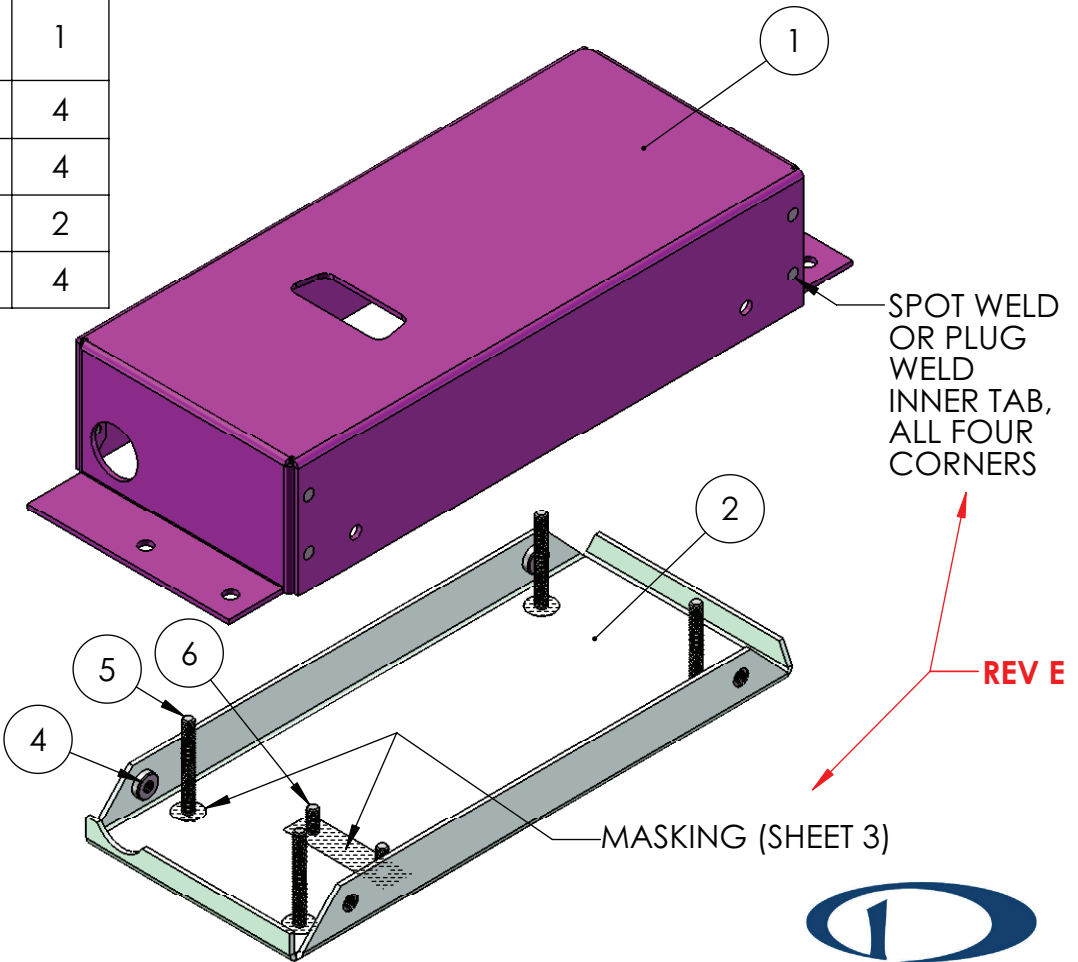


ITEM NO.	PART NUMBER	DESCRIPTION	QTY.
1	100825-000	CONTROL BOARD LID, ENCLOSURE, CARBON	1
2	100825-001	ENCLOSURE BASE, CARBON	1
3	100825-002	INTERCOM LID, ENCLOSURE, CARBON (SHEET 4)	1
4	PEM CLS-440-1	CLINCH NUT, SST	4
5	PEM FHS-440-16	STUD, SST	4
6	PEM FHS-440-5	STUD, SST	2
7	PEM FHS-440-14	STUB, SST	4

REVISIONS			
REV.	DESCRIPTION	DATE	APPROVED
A-C	NEW DESIGN/DEVELOPMENT		
D	CHANGED HARDWARE, CHANGED 4 TABS AND 1 FLANGE INSIDE, ADDED CUTOUT	6-19-08	WESS FALLON
E	VARIOUS CHANGES (SEE NOTES WHERE CHANGES OCCUR) AND ADDED ITEM 3, ADDED POWDER COAT	10-7-08	WESS FALLON



FILE FORMATS AVAILABLE:
SOLIDWORKS, .IGES, .STL, .SAT, .DXF, .STEP

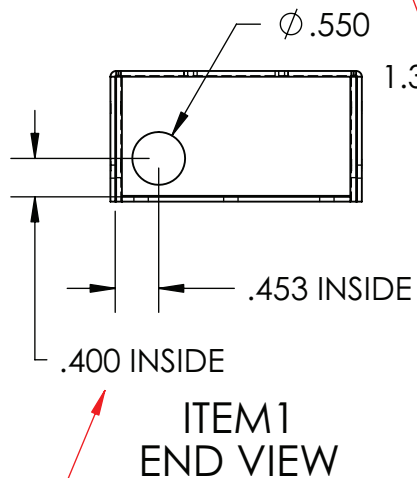
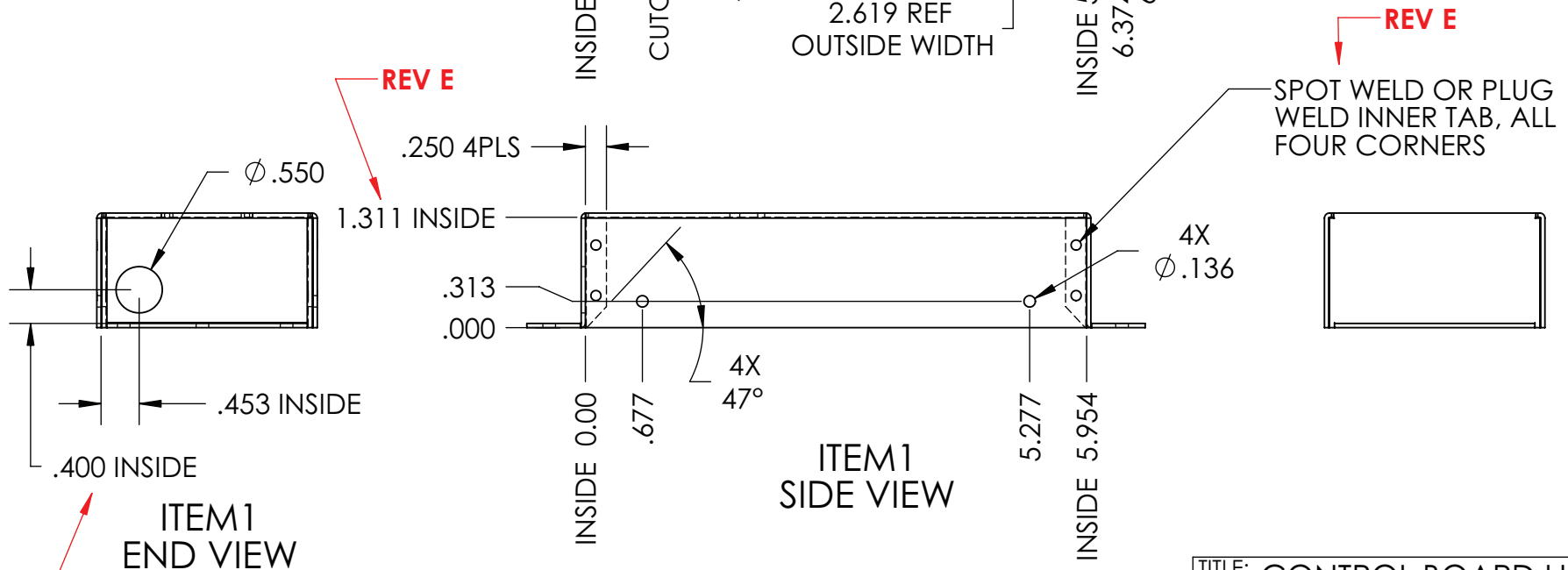
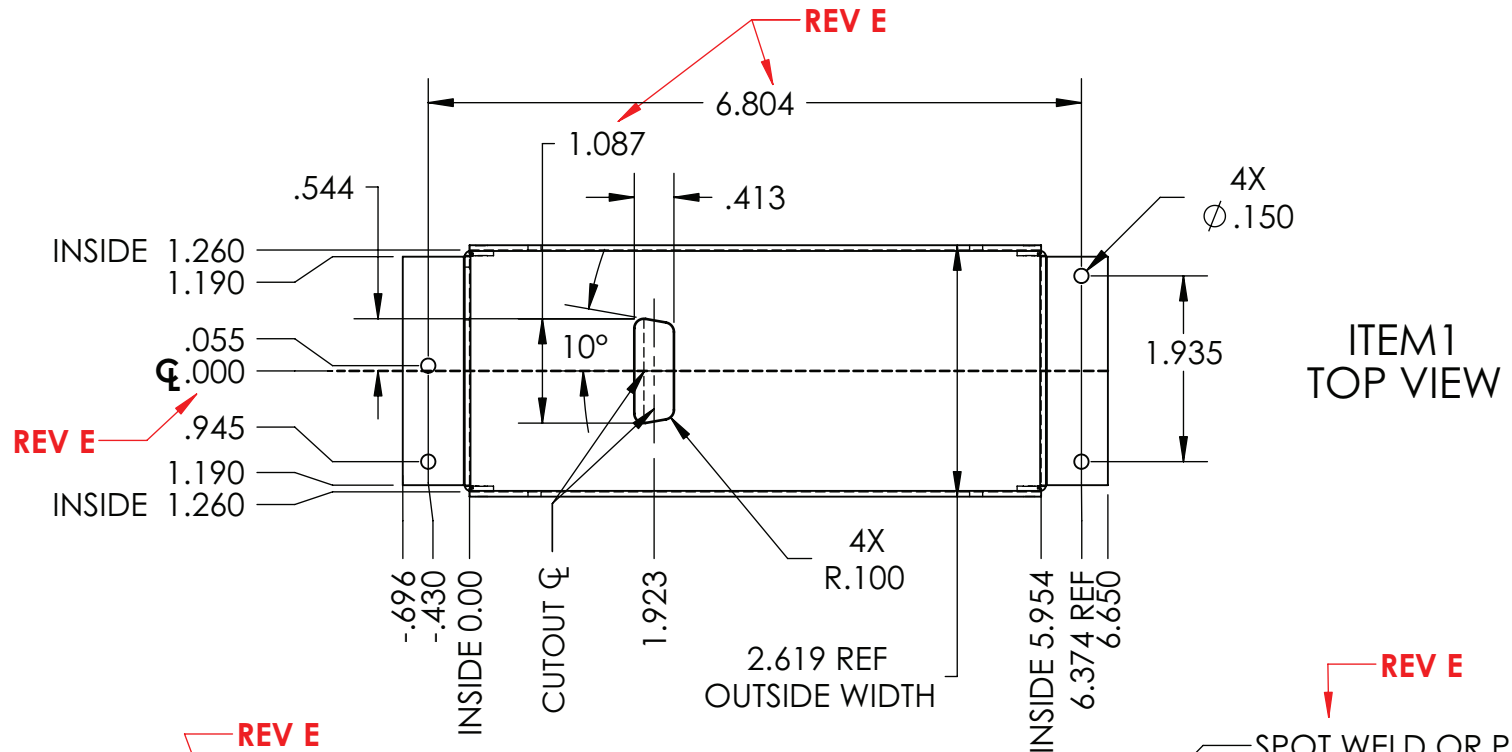
NOTES:

1. ALL DIMENSIONS MEASURED IN INCHES
2. TOLERANCES ON ALL ROUND HOLES 0.003"
3. ALL INSIDE BEND RADII 0.029"
4. MATERIAL THICKNESS .050
5. BREAK ALL SHARP EDGES.
6. PARTS TO BE CLEAN OF GREASE & METAL DUST.
7. BLACK POWDER COAT ALL INTERNAL AND EXTERNAL SURFACES (EXCEPT IN NOTE 8).
8. MASK ALL THREADS, .300 DIA AROUND BASE OF STUDS, AND THE AREA SHOWN IN VARIOUS LOCS.
9. SPOT WELD OR PLUG WELD INNER TAB, ALL FOUR CORNERS AS SHOWN

**REV E:
NOTES HAVE CHANGED,
AND ADDED MASKING
AND POWDER COAT**



DIMENSIONS ARE IN INCHES TOLERANCES: FRACTIONAL ± ANGULAR: BEND ±1° TWO PLACE DECIMAL ±0.10 THREE PLACE DECIMAL ±.005	NAME	DATE	TITLE:	
	DRAWN	W. FALLON	6-10-2008	ENCLOSURE, CARBON
PROPRIETARY AND CONFIDENTIAL THE INFORMATION CONTAINED IN THIS DRAWING IS THE SOLE PROPERTY OF DYNON AVIONICS	CHECKED		SIZE	DWG. NO.
	MATERIAL	ALUMINUM, 5052-H35	A	100825
FINISH	NONE		REV	E
SCALE: 1:4			SHEET 1 OF 7	



TITLE: CONTROL BOARD LID, CARBON ENCLOSURE		
SIZE A	DWG. NO. 100825-000	REV E
SCALE: 1:4		SHEET 2 OF 7

